

# CLAMPS, LIGHTWEIGHT DESIGN



No. 6310

## Clamps with plastic cap

with captive compression piece

**NEW!**



Order no.	B1	Slot	Clamping bolt DIN 787	for clamping screw metric	for clamping screw inch	Weight [g]
376863	11	10	-	M10	3/8	257
376889	14	12+14	-	M12 M14	1/2	708
376905	18	16+18	-	M16 M18	5/8	1235
376921	22	20+22	-	M20 M22	3/4	1880
376947	26	24+28	-	M22 M24	3/4 1	2799
376555	11	10	M10x10x80	M10	3/8	349
376871	14	12	M12x12x100	M12 M14	1/2	886
376897	14	14	M12x14x125	M16 M18	5/8	905
376913	18	16	M16x16x160	M20 M22	3/4	1648
376939	18	18	M16x18x160	M22 M24	3/4 1	1668

### Application:

The clamp is used for all clamping tasks in which clamping is effected via T-grooves, grooves and threaded bores.

### Advantage:

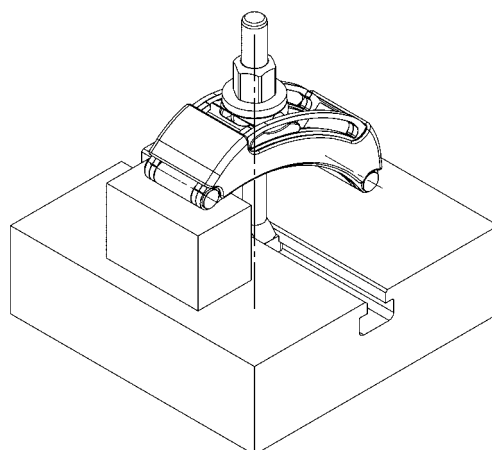
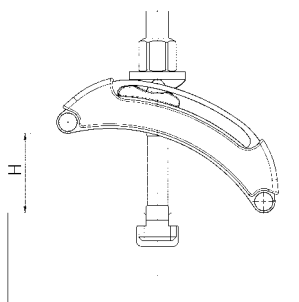
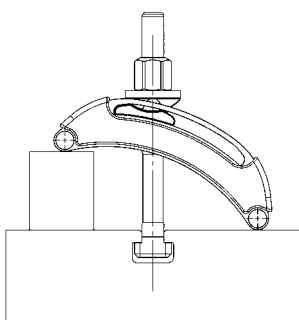
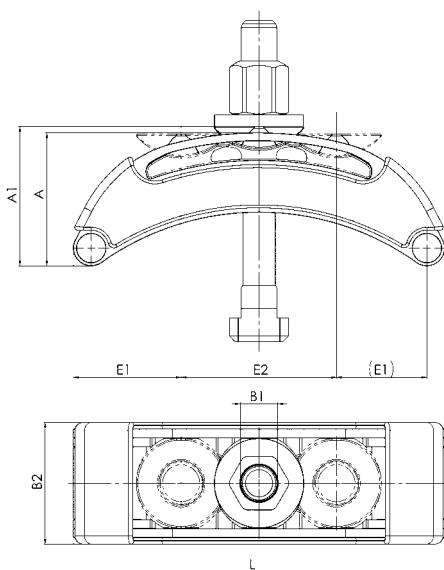
Weight-saving thanks to lightweight design. Variable and fast adjustment option at a distance from the workpiece. No additional clamping supports are needed to reach the required clamping height. The shim cannot be detached from the clamp.

### Note:

For clamping, either clamping screws DIN 787, stud bolts DIN 6379 and cheese head screws DIN 912 can be used.

### Dimensions:

Order no.	L	H1	A	A1	B2	E1	E2
376863	80	0-15	30,5	32,0	44	30	19
376889	125	0-33	47,0	49,5	57	37	51
376905	160	0-45	58,5	62,0	67	49	63
376921	200	0-65	71,5	75,0	72	58	83
376947	250	0-85	89,5	94,0	82	74	102
376555	80	0-15	30,5	32,0	44	30	19
376871	125	0-33	47,0	49,5	57	37	51
376897	125	0-45	58,5	62,0	67	49	63
376913	160	0-65	71,5	75,0	72	58	83
376939	160	0-85	89,5	94,0	82	74	102

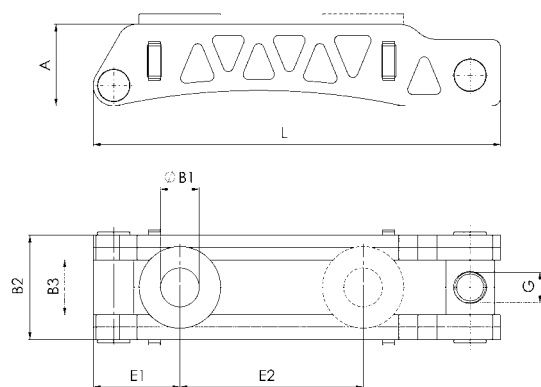


Subject to technical alterations.

No. 6311

Clamps, lightweight

**NEW!**



Order no.	B1	Groove DIN 508	Clamping bolt DIN 787	for clamping screw metric	for clamping screw inch	Weight [g]
376962	22	20, 22, 24, 28	-	M20 M22	3/4	1289
377002	26	24, 28, 30, 36	-	M24	1	1630
377044	33	36, 42	-	M30	1 1/4	4522
377069	43	42, 48	-	M36 M42	1 1/2	9709
376731	22	20	M20x20x160	M20 M22	3/4	2434
376756	22	20	M20x20x200	M20 M22	1	2531
376772	26	24	M24x28x200	M24	1	3779
376798	26	24	M24x28x250	M24	1 1/4	3884
376814	33	36	M30x36x315	M30	1 1/4	9044
376830	43	48	M36x42x400	M36 M42	1 1/2	17560

## Application:

The clamp is used for all clamping tasks in which clamping is effected via T-grooves, grooves and threaded bores.

## Advantage:

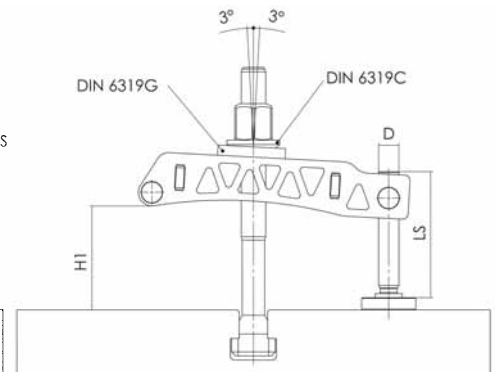
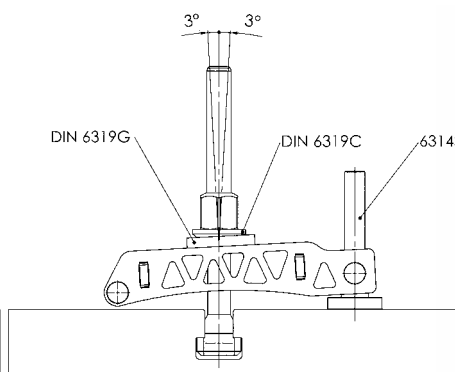
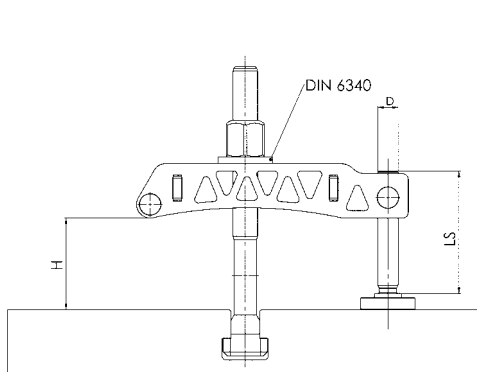
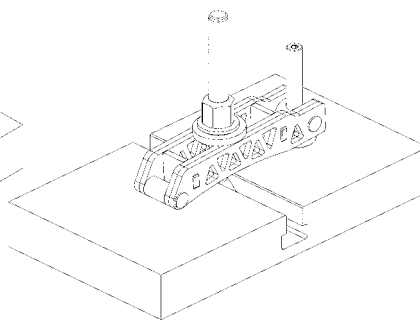
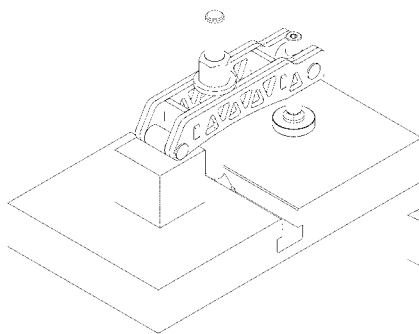
The significant weight-saving achieved by the lightweight design means this clamp can be used for rotating clamping tasks, in addition to all other clamping tasks. Variable and fast adjustment option at a distance from the workpiece. No additional clamping supports are needed to reach the required clamping height. The shim cannot be detached from the clamp.

## Note:

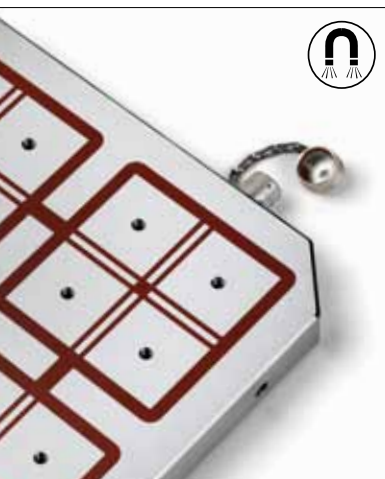
For clamping, either clamping screws DIN 787, stud bolts DIN 6379 and cheese head screws DIN 912 can be used.

## Dimensions:

Order no.	L	H	H1	A	B2	B3	E1	E2	G	D x LS
376962	200	-	-	43	49	25	43	89	M20	-
377002	250	-	-	44	54	30	46	116	M24	-
377044	315	-	-	71	72	40	59	152	M30	-
377069	400	-	-	80	102	54	74	209	M30	-
376731	200	16-49	8-58	43	49	25	43	89	M20	M20x69
376756	200	16-89,5	8-98	44	49	25	44	89	M20	M20x109
376772	250	20-69	10-81	44	54	30	46	116	M24	M24x87
376798	250	20-120	10-130	59	54	30	59	116	M24	M24x137
376814	315	18-142	7-214	71	72	40	59	152	M30	M30x180
376830	400	8-135	7-153	80	102	54	74	209	M30	M30x180



Subject to technical alterations.



MAGNETIC CLAMPING  
TECHNOLOGY



HYDRAULIC CLAMPING SYSTEMS



„ZERO-POINT“  
CLAMPING SYSTEM



CLAMPING AND FIXTURE SYSTEMS



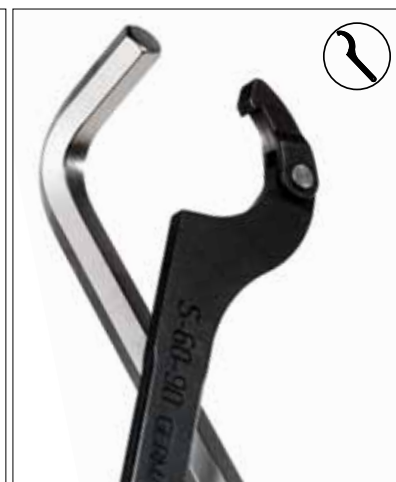
TOGGLE CLAMPS,  
MANUAL AND PNEUMATIC



VACUUM  
CLAMPING TECHNOLOGY



STANDARD CLAMPING  
ELEMENTS



HAND TOOLS



**CLAMPING. SCREWING. LOCKING.**

**ANDREAS MAIER GmbH & Co. KG**

Waiblinger Straße 116 · D-70734 Fellbach

Postfach 1760 · D-70707 Fellbach

Phone: +49 711 5766-0

Fax: +49 711 575725

E-Mail: [amf@amf.de](mailto:amf@amf.de)

Internet: [www.amf.de](http://www.amf.de)