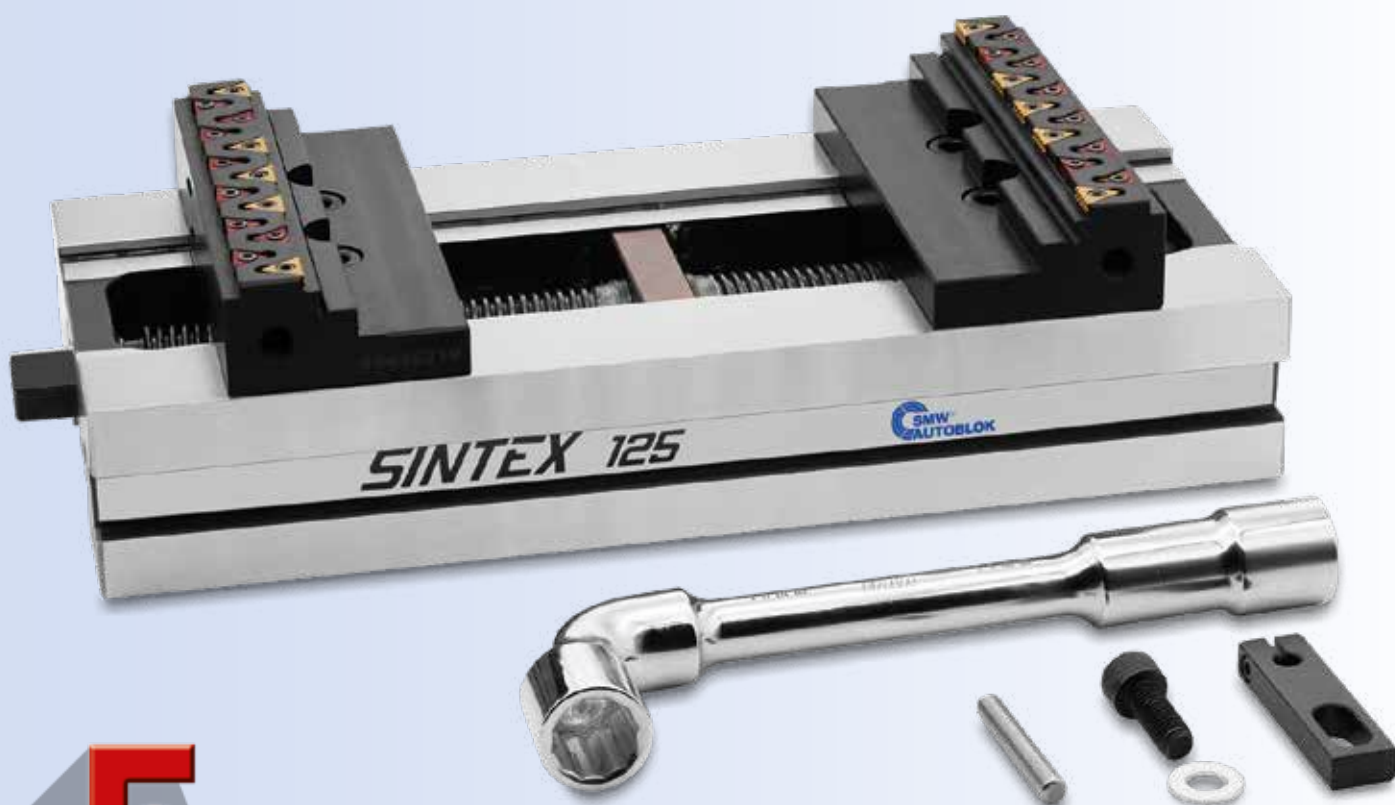


SINTEX20-1
vers. EN

SINTEX 5 axis





5
axis

SINTEX



SINTEX 100 - 125

Excellent quality-price ratio

Page

5



SINTEX 100

Page

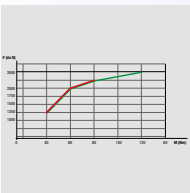
6



SINTEX 125

Page

7



SINTEX 100 - 125

Technical Data

Page

8

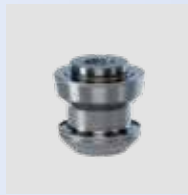


SINTEX 100 - 125

Accessories and Spare Parts

Page

9



Clamping Pins

Accessories

■ For APS 140 and APS 190

Page

13



SINTEX 100 - 125

Accessories and Spare Parts

Page

14

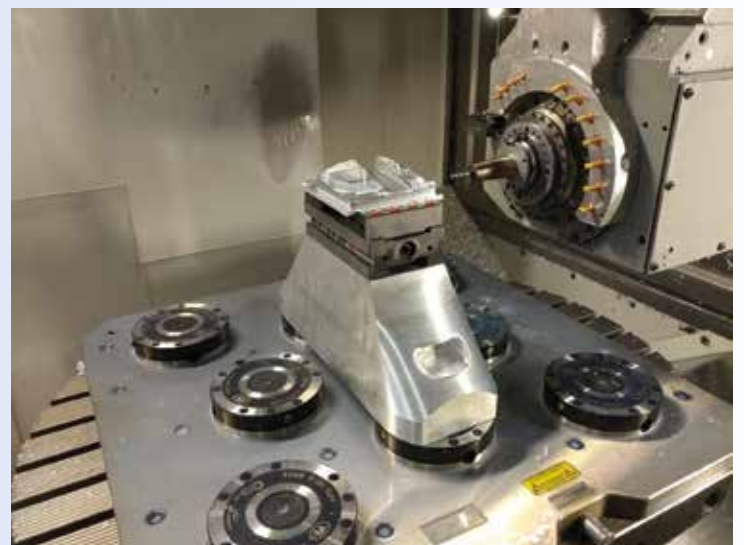


SINTEX 100 - 125

■ SinterGrip

Page

17



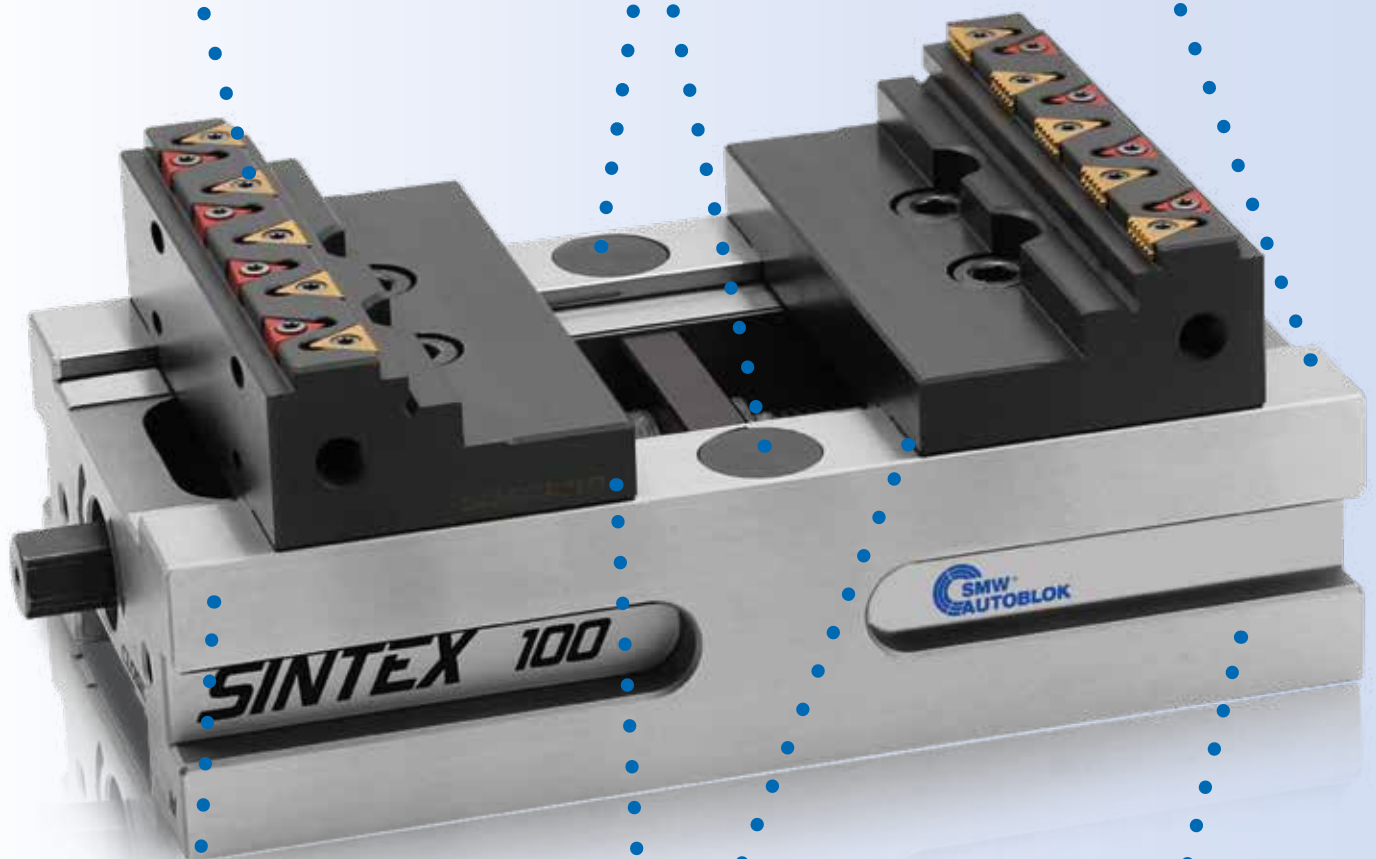
5
axis

SINTEX

SinterGrip technology
only 3.5 mm
clamping surface

Front
mounting holes

Highest
accuracy



Compact

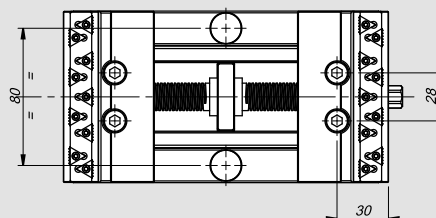
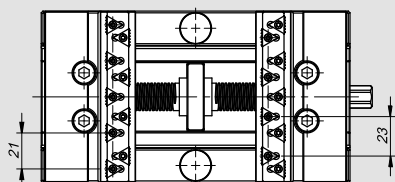
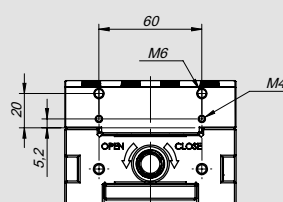
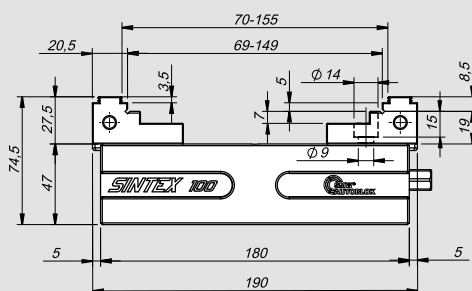
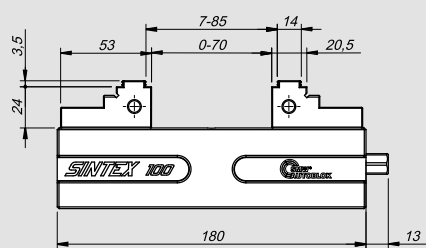
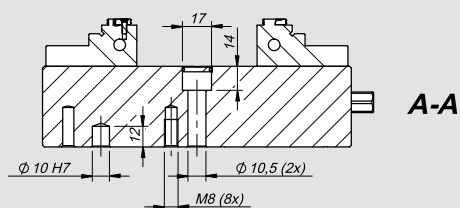
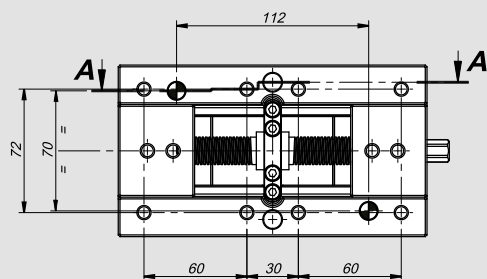
Great opening
range
(till to 250mm)

Flexible

SINTEX 100

PREMIUM

Complete with 10 SinterGrip inserts, 10 protection inserts, wrench, workstop

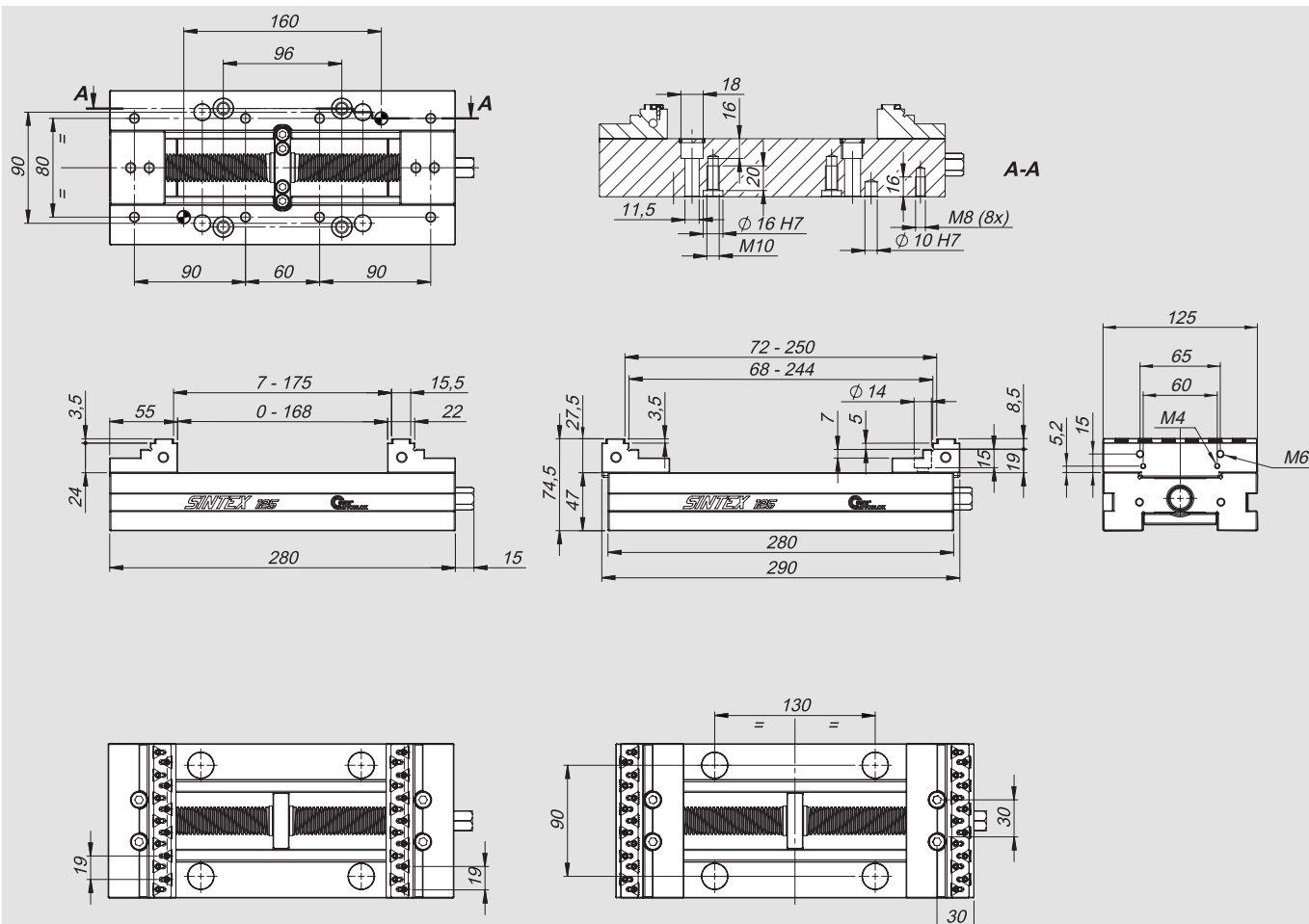
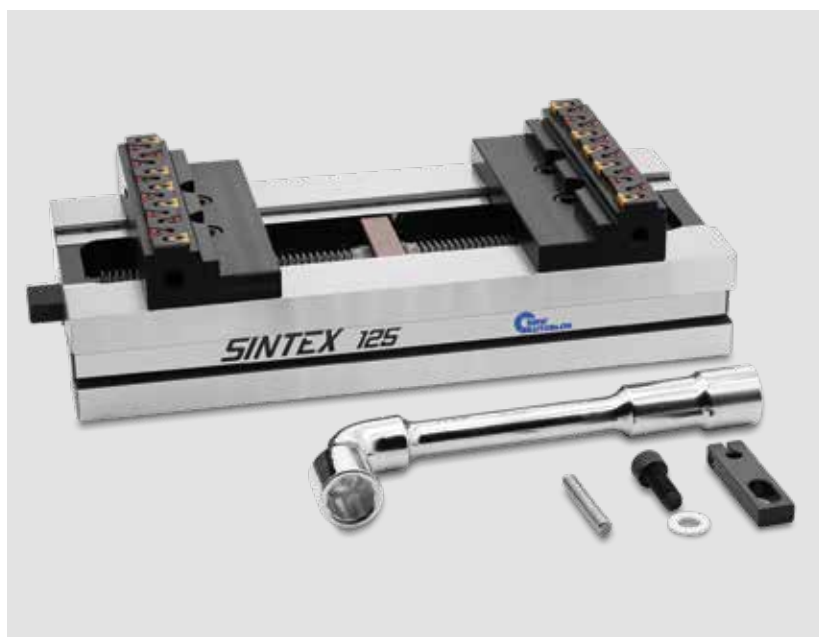


Id. No.	Type
77584911	SINTEX 100 STD
77584912	SINTEX 100 ALU
77584913	SINTEX 100 HRC

SINTEX 125

PREMIUM

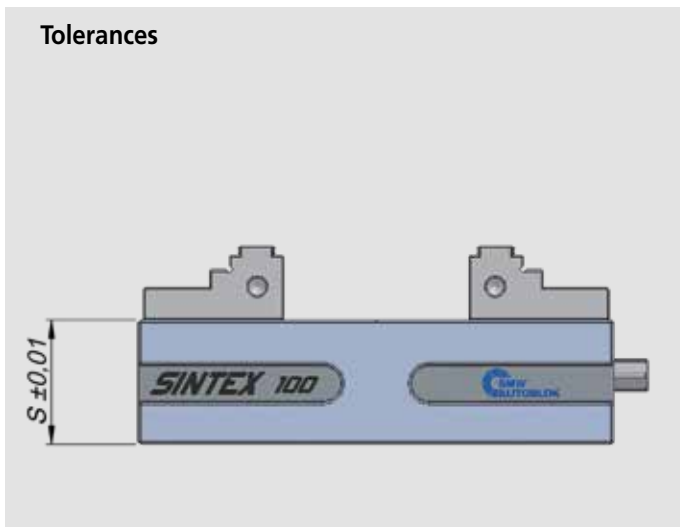
Complete with 10 SinterGrip inserts, 10 protection inserts, wrench, workstop



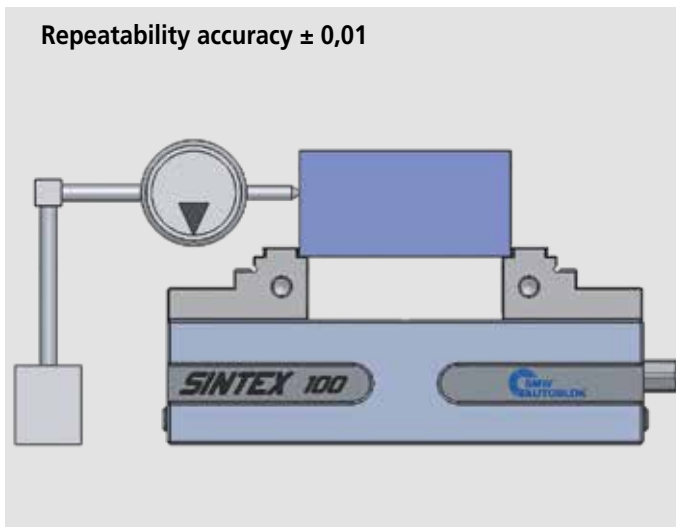
Id. No.	Type
77584961	SINTEX 125 STD
77584962	SINTEX 125 ALU
77584963	SINTEX 125 HRC

TECHNICAL DATA

Tolerances

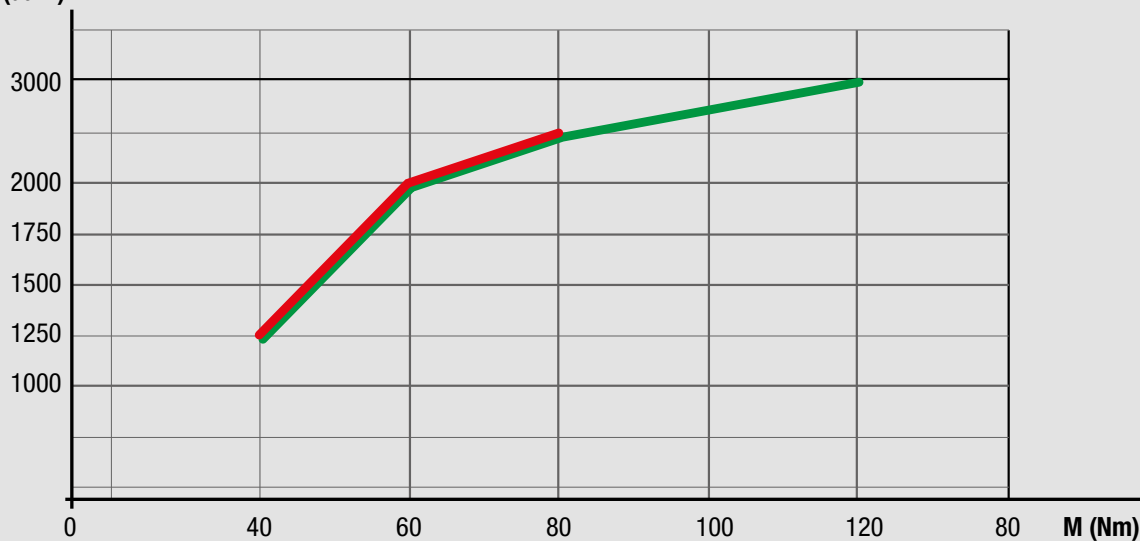


Repeatability accuracy $\pm 0,01$

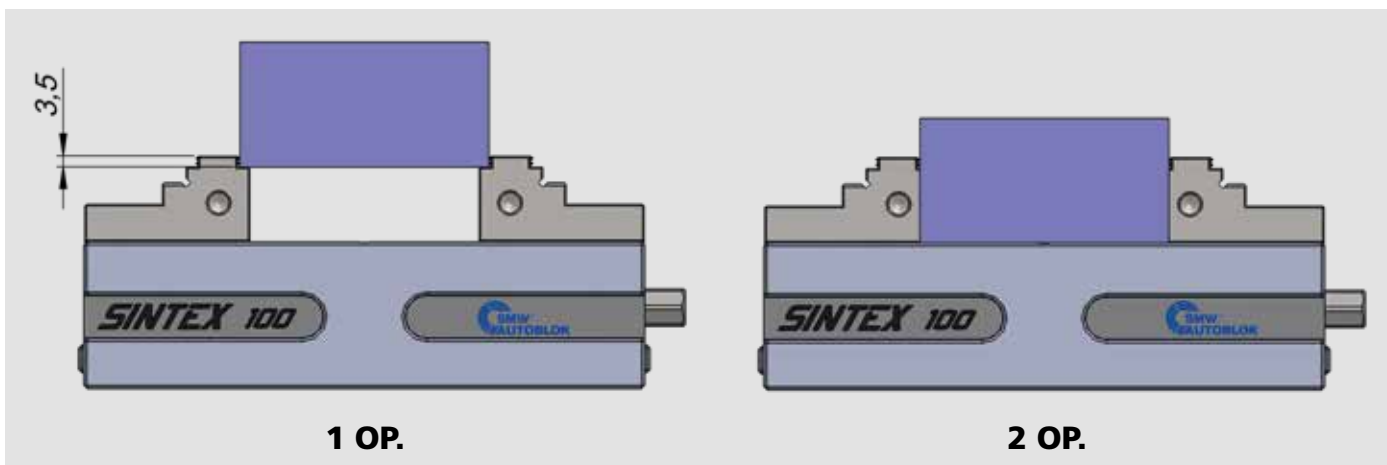


Clamping forces diagram

F (da N)



Working example



OML APS 140
Schunk VERO-S 138
Unilock
AMF K20

SEZIONE A-A

Ø10 H7 $\begin{smallmatrix} +0.015 \\ 0 \end{smallmatrix}$

Ø9

10

14

9

M12

M6

(x6)

Ø13.5

(x2)

Ø15 (x8)

58492021



5 X 45°

12 H7 $^{+0.018}_0$

200

28

46

46

54

F

60°

12 H7 $^{+0.018}_0$

F

$\phi 56$

140

SEZIONE F-F

SCALA 1:3

OML APS 140
Schunk VERO-S 138
Unilock
AMF K20
(3x)

22

M10 (x3)

300

6.4

$\phi 25$ H7 $^{+0.021}_0$ (x3)

92

M6 (x6)

1.4

56

58497021

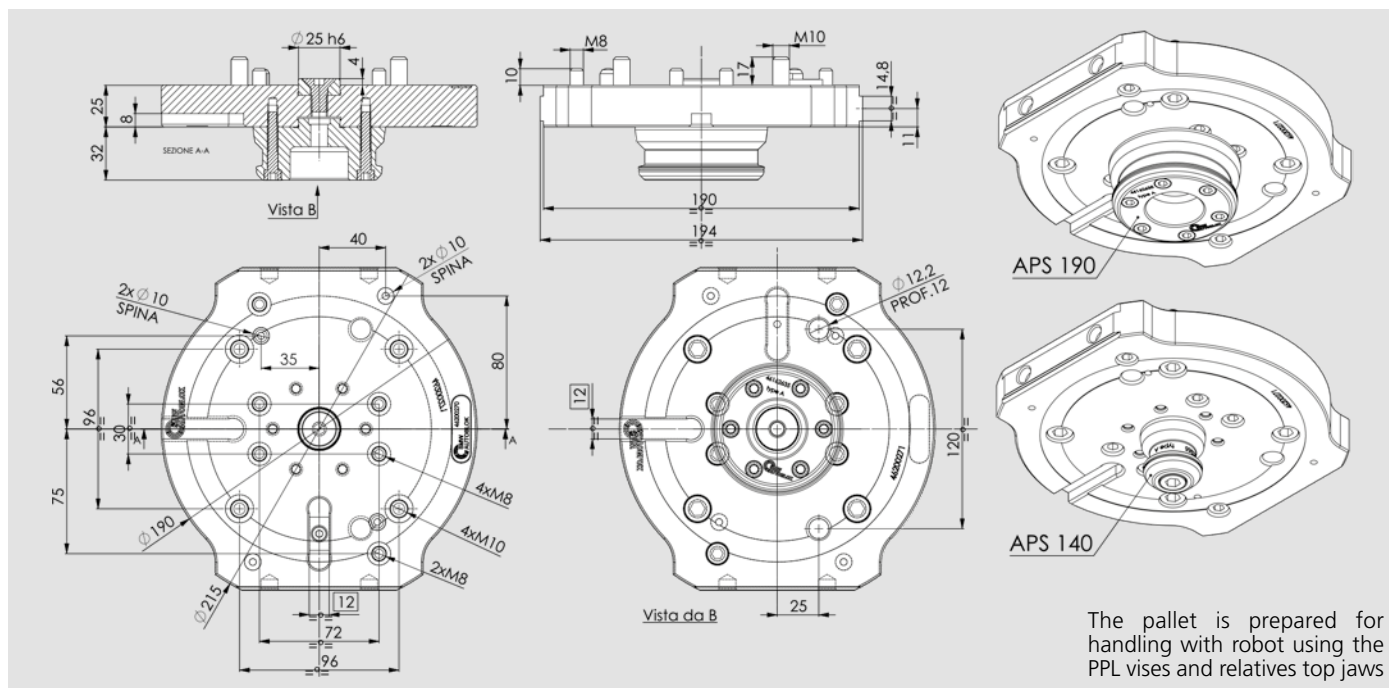




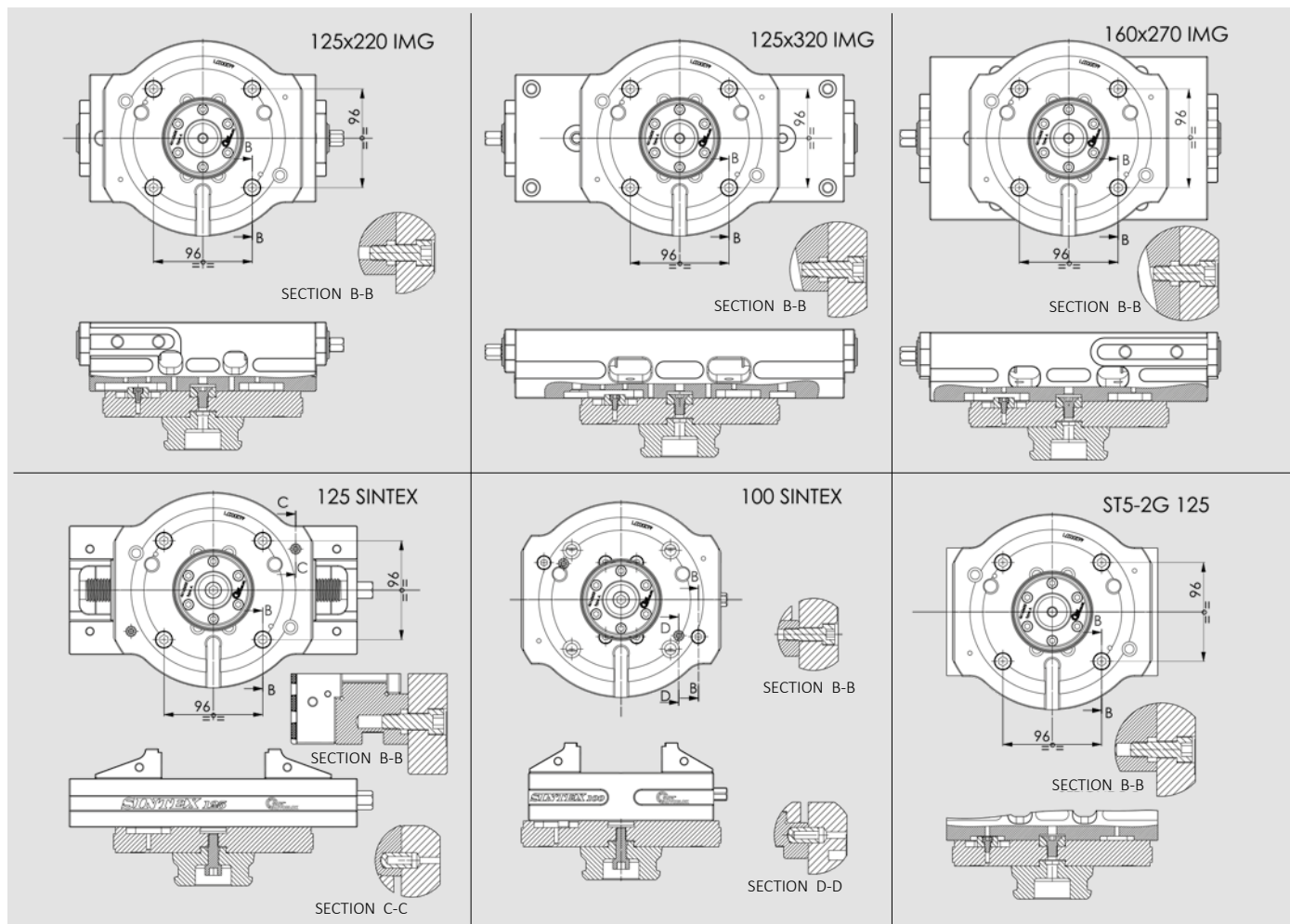
Id. n. pallet without vise	
46200275	per APS140
46200270	per APS190

Working example



Prepared for robot loading

Id. n. pallet without vise	Weight	Vise model (see scheme below)		
46200275 pallet holder vises loading robot APS140	6 Kg	100 - 125 SINTEX	125x220 - 125x320 - 160x270 IMG	125ST5-2G
46200270 pallet holder vises loading robot APS190	6,7 Kg	100 - 125 SINTEX	125x220 - 125x320 - 160x270 IMG	125ST5-2G

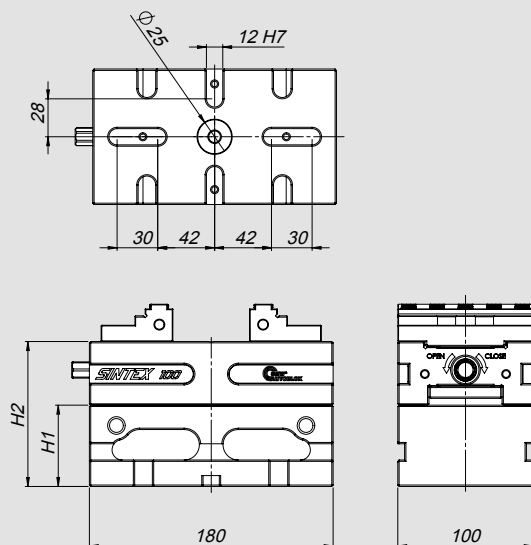


Risers

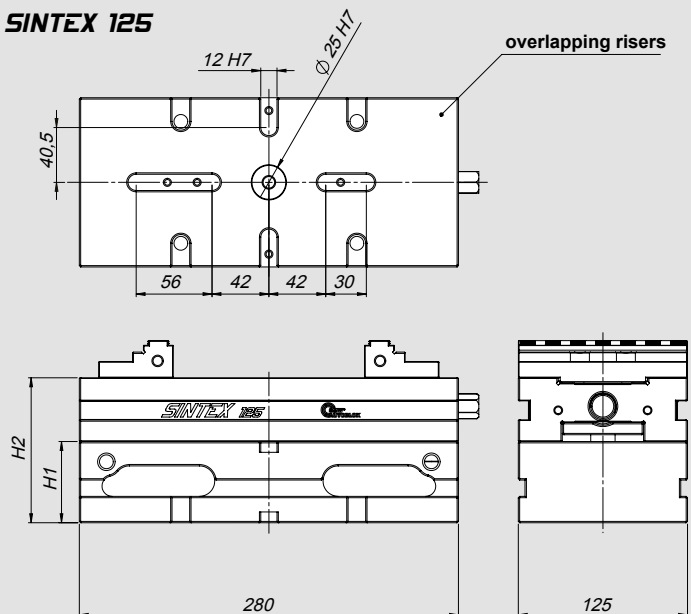


Type	Id. No.	H1	H2	Weight
SINTEX 100	58492111	60	107	6 Kg
SINTEX 100	58492121	100	147	9 Kg
SINTEX 125	58497111	60	107	14 Kg
SINTEX 125	58497121	100	147	18 Kg

SINTEX 100



SINTEX 125

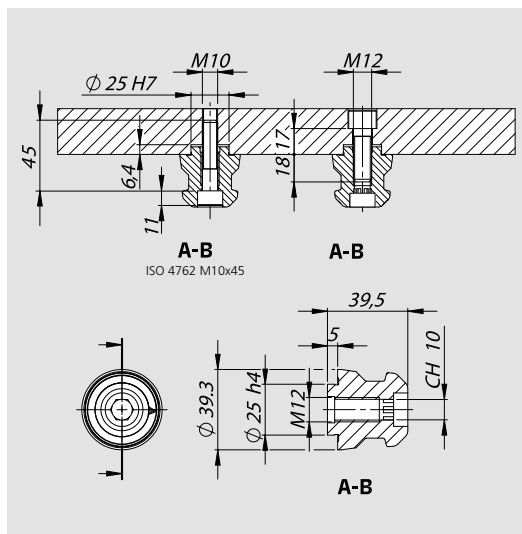


Working example



Only for SINTEX 125



Clamping pins

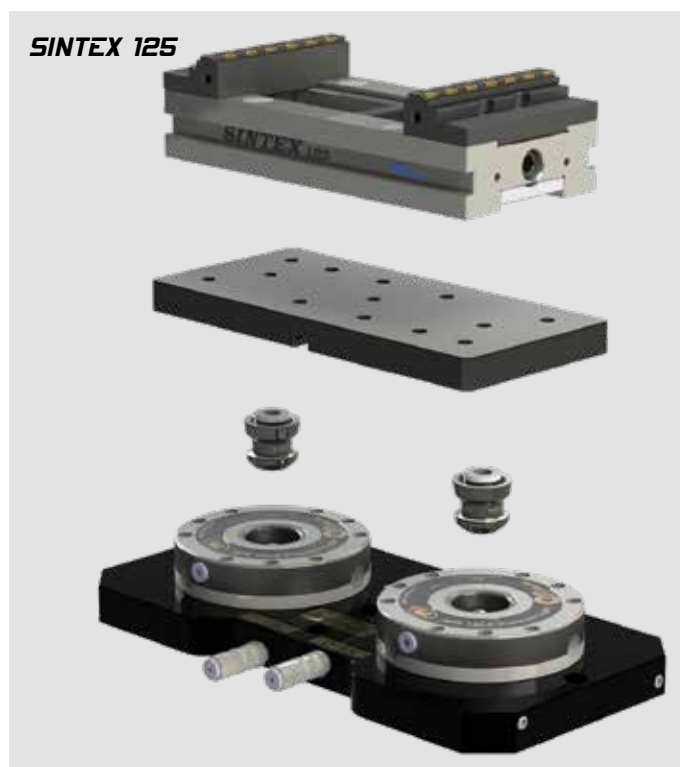
Positioning and clamping of the device and/or of the workpiece are achieved through the clamping pins



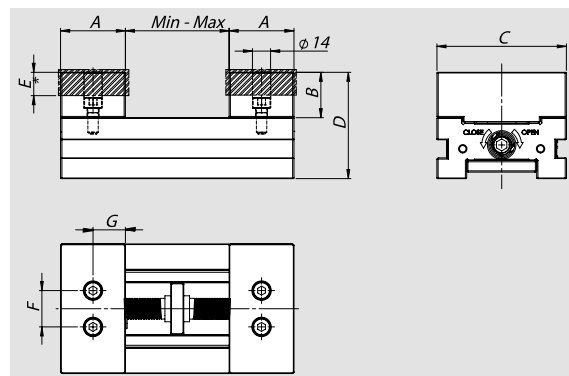
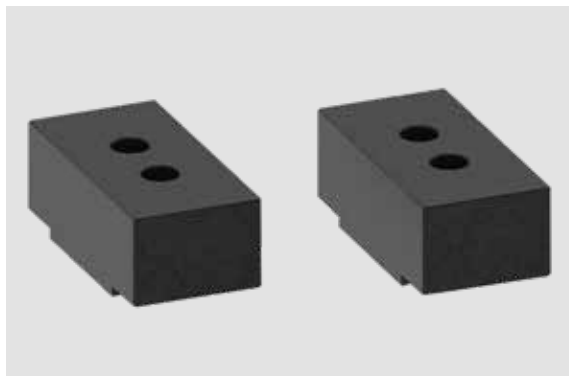
		A	B
Id. No.	M12	46162355	46162356

Key for APS for single use

Type	Id. No.
APS 140 / 190	46162333

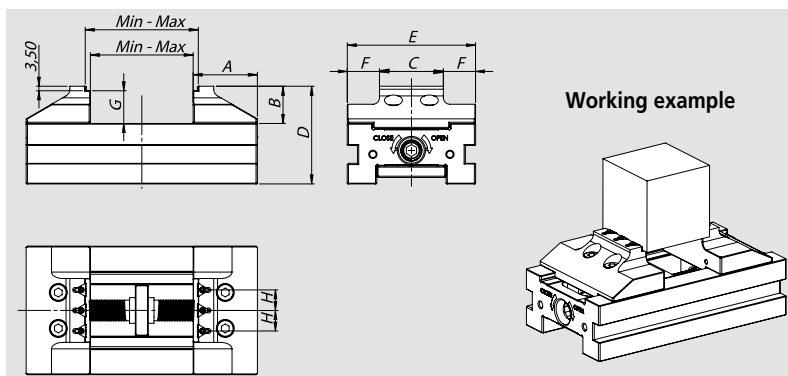
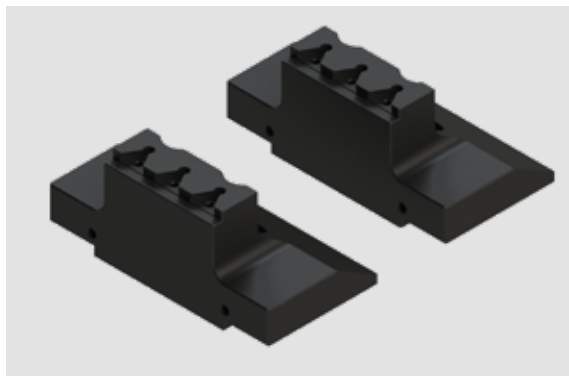
Working example

Pair of soft steel-ALU jaws



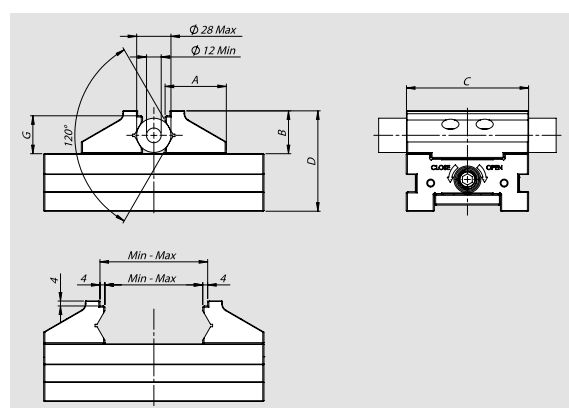
Type	Steel	Alluminium	A	B	C	D	E	F	G	Min.	Max
SINTEX 100	58 49 16 29	58 49 16 19	50	35	100	82	18	28	25	0	77
SINTEX 125	58 49 66 29	58 49 66 19	65	35	125	82	18	34	25	0	177

Pair of reduced jaws

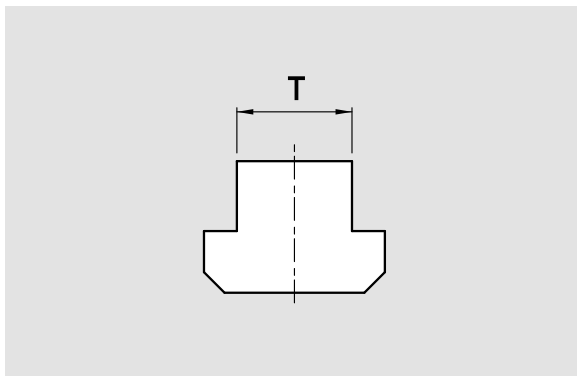


Type	Id. No.	A	B	C	D	E	F	G	H	Min.	Max
SINTEX 100	58 49 15 19	50	29	50	74	100	25	25,5	16	0 - 7	78 - 85
SINTEX 125	58 49 65 19	65	34	55	81	125	35	29,5	18	0 - 7	178 - 185

Pair of V jaws



Type	Id. No.	A	B	C	D	G	Min.	Max
SINTEX 100	58 49 14 19	50	35	100	82	31	0 - 8	78 - 85
SINTEX 125	58 49 64 19	65	35	125	82	31	0 - 8	178 - 185

Pair of Clamps

Type	Id. No.					
	mm 12	mm 14	mm 16	mm 18	mm 20	mm 22
SINTEX 100 - 125	58 01 27 92	58 01 27 93	58 01 27 94	58 01 27 95	58 01 27 96	58 01 27 97

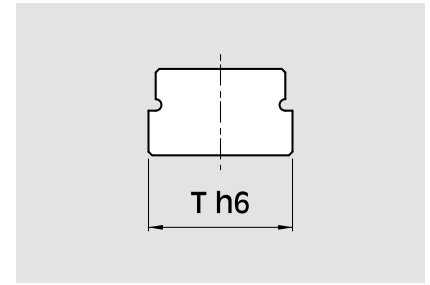
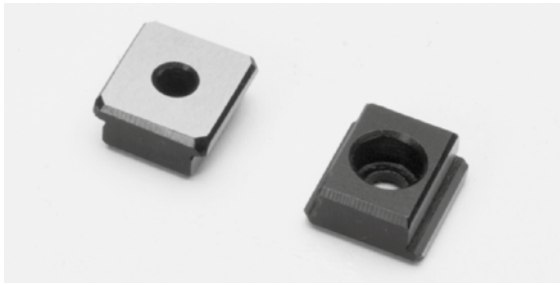
Torque wrench

	SINTEX 100	SINTEX 125
Id. No.	51 50 10 08	51 50 10 09

Pair of jaws PREMIUM

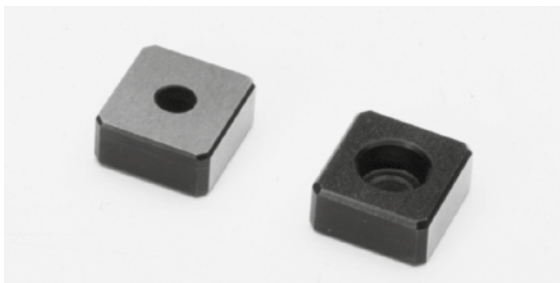
	SINTEX 100	SINTEX 125
Id. No.	58 49 12 19	58 49 62 19

Pair of special positioning keys

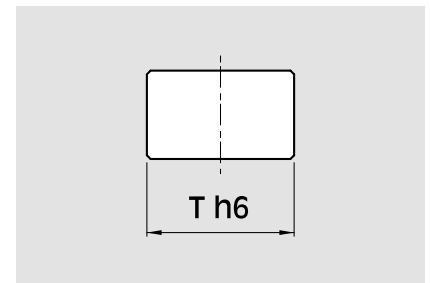


Type	Id. No.					
	mm 12 - h6	mm 14 - h6	mm 16 - h6	mm 18 - h6	mm 20 - h6	mm 22 - h6
SINTEX 100 - 125	-	58 01 15 93	58 01 15 94	58 01 15 95	58 01 15 96	58 01 15 97

Pair of standard positioning keys



	SINTEX 100 - 125
Id. No.	58 01 15 92



Workstop



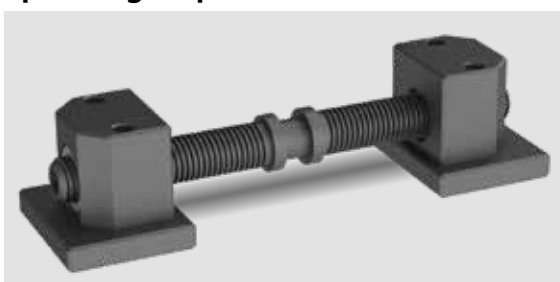
	SINTEX 100 - 125
Id. No.	58 31 50 20

Key



	SINTEX 100	SINTEX 125
Id. No.	58 49 19 10	58 49 69 10

Spindle group



	SINTEX 100	SINTEX 125
Id. No.	58 49 90 10	58 49 90 20

SinterGrip

Our new patented product SinterGrip is born to satisfy the current need to clamp a workpiece for very few millimeters (with SinterGrip 3,5 mm clamping surface), and this for the following reasons:

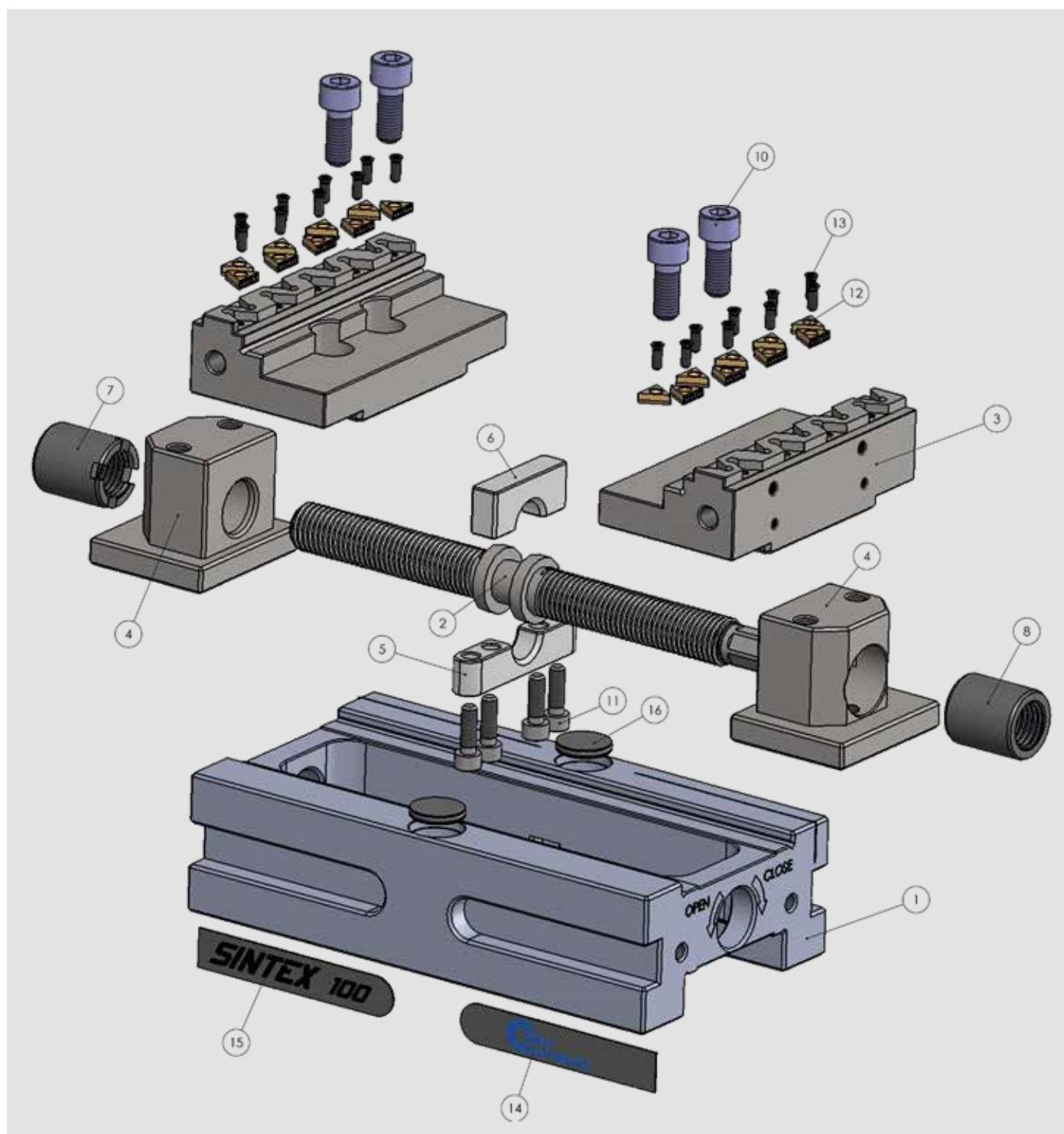
- 1) In order to machine the workpiece completely in a single operation (especially for 5 axis machines);
- 2) In order to save money for the raw materials, especially when they have a big impact on the price (aluminum, titanium, etc.).

Indirectly to these reasons, and in order to improve the performance of the machine tool and the tools

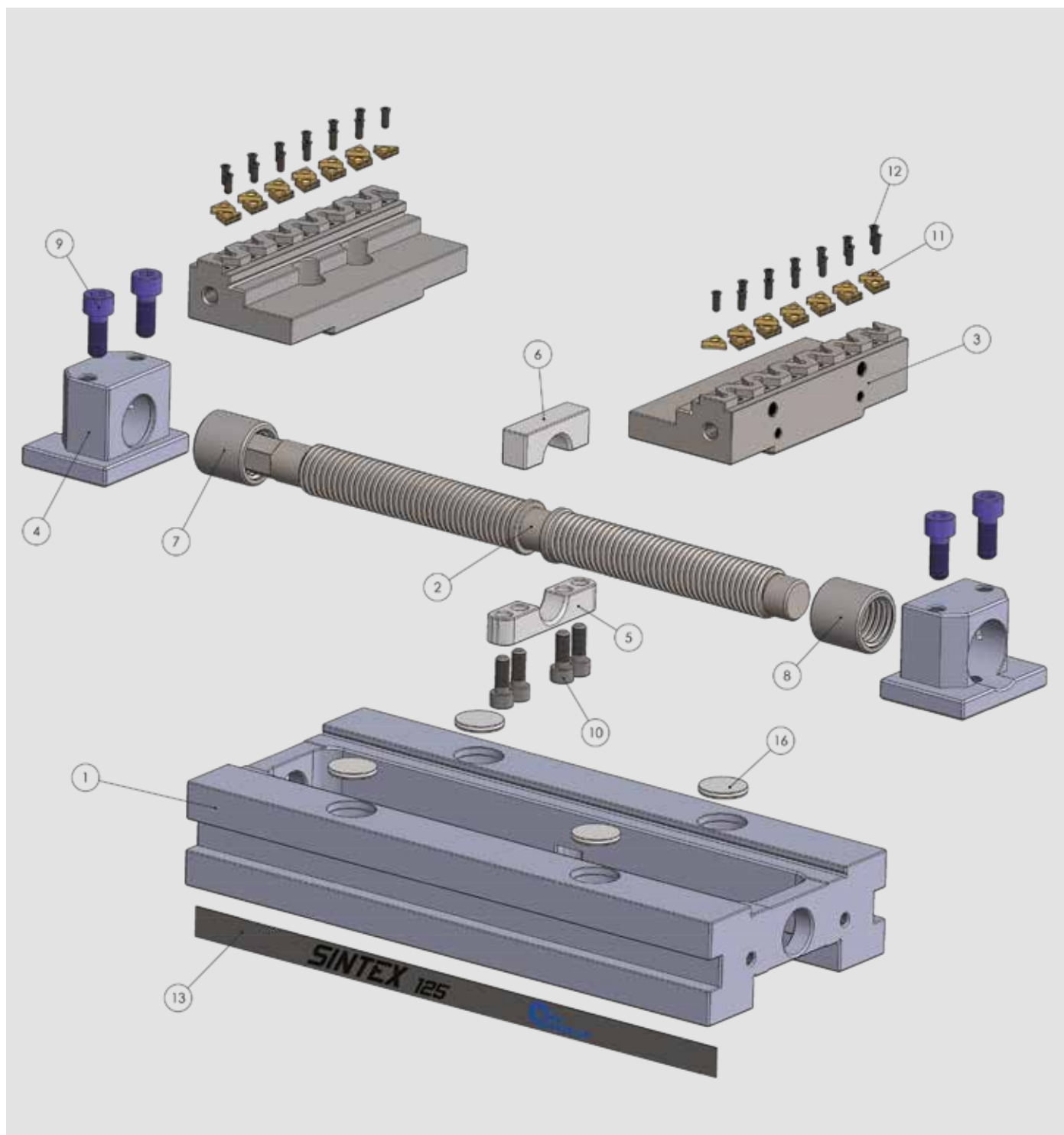
**higher cutting speed + higher feed rate =
bigger volume of metal removed = less time to machine the workpiece,**
the market requires safe clamping, which could at the same time possibly avoid the deformations of the piece itself.

	Id. No.	Description
	58 45 01 19	Set of 10 SinterGrip inserts STD for steel
	58 45 01 29	set of 10 SinterGrip inserts HRC for hardened steel / titanium until 50-54 HRC
	58 45 01 39	Set of 10 SinterGrip inserts for ALU
	58 45 02 19	Kit 10VTx30 for inserts SINTERGRIP
	58 45 05 19	Kit 10 protection inserts in aluminum





1 - Base Sintex	5 - Lower support	10 - Screw TCEI	14 - SINTEX label
2 - Main screw	6 - Upper support	11 - Screw TCEI	15 - SINTEX label
3 - Jaw	7 - Bush	12 - SinterGrip insert STD	16 - ALU plug
4 - Block driver	8 - Bush	13 - Screw TCEIBAS	



1 - Base Sintex	5 - Lower support	9 - Screw TCEI	13 - SINTEX label
2 - Main screw	6 - Upper support	10 - Screw TCEI	16 - ALU plug
3 - Jaw	7 - Bush	11 - SinterGrip insert STD	
4 - Block driver	8 - Bush	12 - Screw TCEIBAS	

**SMW-AUTOBLOK Spannsysteme GmbH**

Postfach 1151 • D-88070 Meckenbeuren
 Wiesentalstraße 28 • D-88074 Meckenbeuren
 Tel. +49 (0) 7542 - 405 - 0
 Vertrieb Inland: Fax +49 (0) 7542 - 3886
 E-mail ► vertrieb@smw-autoblok.de
 Sales International: Fax: +49 (0) 7542 - 405 - 181
 E-mail ► sales@smw-autoblok.de

**U.S.A.**

SMW-AUTOBLOK Corporation
 285 Egidi Drive - Wheeling, IL 60090
 Tel. +1 847 - 215 - 0591
 Fax +1 847 - 215 - 0594
 E-mail ► autoblok@smwautoblok.com

**Japan**

SMW-AUTOBLOK Japan Inc.
 1-56 Hira, Nishi-Ku
 461-Nagoya
 Tel. +81 (0) 52 - 504 - 0203
 Fax +81 (0) 52 - 504 - 0205
 E-mail ► japan@smwautoblok.co.jp

**China**

SMW-AUTOBLOK (Shanghai) Work Holding Co., Ltd.
 Building 6, No.72, JinWen Road, KongGang
 Industrial Zone, ZhuQiao Town, Pudong District
 201323, Shanghai P.R. China
 Tel. +86 21 - 5810 - 6396
 Fax +86 21 - 5810 - 6395
 E-mail ► china@smwautoblok.cn

**Mexico**

SMW-AUTOBLOK Mexico, S.A. de C.V.
 Pirineos No. 515-B, Nave 16
 Col. Industrial Benito Juarez
 Micro Parque Industrial Santiago
 Queretaro, Qro. C.P. 76130
 Tel. +52 (442) 209 - 5118
 Fax +52 (442) 209 - 5121
 E-mail ► smwmex@smwautoblok.mx

**India**

SMW-AUTOBLOK Workholding Pvt. Ltd.,
 Plot No. 4, Weikfield Industrial Estate,
 Gat No. 1251, Sanaswadi, Tal - Shirur,
 Dist - Pune. 412 208
 Tel. +91 2137 - 616 974
 Fax +91 2137 - 616 972
 E-mail ► info@smwautoblok.in

**Brazil**

SYSTEC METALÚRGICA LTDA
 R. Luiz Brisque, 980
 13280-000 - Vinhedo - SP
 Tel. +55 (0) 193 886 - 6900
 Fax +55 (0) 193 886 - 6970
 E-mail ► systec@systecmetal.com.br

**Argentina**

SMW-AUTOBLOK Argentina
 Rio Pilcomay 1121 - Bella Vista
 RA - 1661 Bella Vista Buenos Aires
 Tel. +54 (0) 1146 - 660 603
 Fax +54 (0) 1146 - 660 603
 E-mail ► federicolojo@systecmetal.com.ar

**AUTOBLOK s.p.a.**

Via Duca D'Aosta n.24
 Fraz.Novaretto
 I-10040 Caprie - Torino
 Tel. +39 011 - 9638411
 Tel. +39 011 - 9632020
 Fax +39 011 - 9632288
 E-mail ► info@smwautoblok.it

**France**

SMW-AUTOBLOK
 17, Avenue des Frères Montgolfier - Z.I Mi-Plaine
 F-69680 Chassieu
 Tel. +33 (0) 4 - 727 - 918 18
 Fax +33 (0) 4 - 727 - 918 19
 E-mail ► autoblok@smwautoblok.fr

**Great Britain**

SMW-AUTOBLOK Telbrook Ltd.
 7 Wilford Industrial Estate
 Ruddington Lane, Wilford
 GB-Nottingham, NG11 7EP
 Tel. +44 (0) 115 - 982 1133
 E-mail ► info@smw-autoblok-telbrook.co.uk

**Spain**

SMW-AUTOBLOK IBERICA, S.L.
 Ursalto 10 - Nave 2, Pol. 27 - Mateo Gaina
 20014 San Sebastián (Guipúzcoa) (Spain)
 Tel. +34 943 - 225 079
 Fax +34 943 - 225 074
 E-mail ► info@smwautoblok.es

**Russia**

SMW-AUTOBLOK Russia
 B.Tul'skaya str., 10, bld.3, off. 323,
 115191 Moscow (Russia)
 Tel. +7 495 -231-1011
 Fax +7 495 -231-1011
 E-mail ► info@smw-autoblok.ru

**Czech Republic / Slovakia**

SMW-AUTOBLOK s.r.o.
 Merhautova 20
 CZ - 613 00 BRNO
 Tel. +420 513 034 157
 Fax +420 513 034 158
 E-mail ► info@smw-autoblok.cz

**Sweden / Norway**

SMW-AUTOBLOK Scandinavia AB
 Kasernvägen 2
 SE - 281 35 Hässleholm
 Tel. +46 (0) 761 420 111
 E-mail ► info@smw-autoblok.se

**Korea**

SMW-AUTOBLOK KOREA CO., LTD.
 1108 ho, Baeksang Startower 1st,
 65, Digital-ro 9-gil, Geumcheon-gu
 Seoul, ROK-08511, Korea
 Tel. +82 2 6267 9505
 Fax +82 2 6267 9507
 E-mail ► info-korea@smw-autoblok.net